

GEROfit® REX fitting system

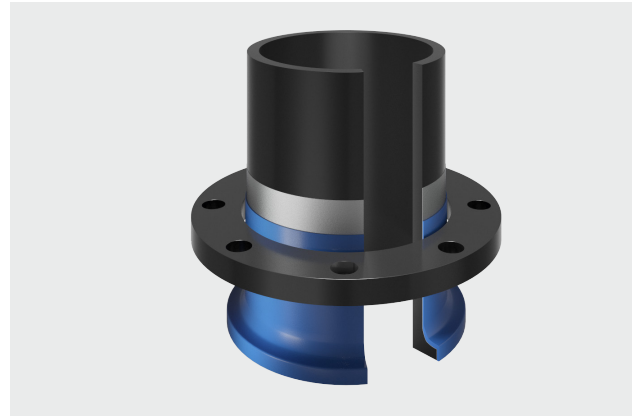


GEROfit® REX

The danger of contamination of drinking water by diffusion increases in contaminated soils and zones like industrial areas, landfills, graveyards or flood areas. **GEROfit® REX** solves this problem permanently. The diffusion barrier between the core pressure pipe and the protective jacket protects the media and the environment.

GEROfit® REX system solution

A barrier pipe system is only as strong as it's weakest part. To ensure the same high quality from **GEROfit® REX** pipes in the whole pipeline system, Gerodur offers now also a wide range of pre-manufactured, diffusion-tight fittings. This saves working time on the construction site for post-factory coating and ensures a steady reliable protection against chemical influences from outside.



Fitting program

- Segmental bends 11° - 90°
- Seamless bends 11° - 90°
- Stub ends - long and short
- Tee's - long and short, reduced
- Branches
- Reducers - long and short, concentric and eccentric
- End caps - long and short
- Socket joints

Dimensions

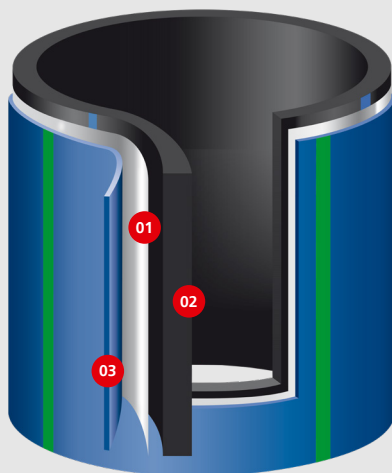
90 mm - 630 mm

SDR classes

7.4 | 9 | 11 | 17

Further dimensions and SDR classes on request.

Tender specifications available from your Gerodur contact person.



Diffusion-proof with **GEROfit® REX** thanks to intelligent film barrier.

- 01 The bi-axially oriented polymer-matrix film with an embedded metallic diffusion barrier forms an intelligent barricade.
- 02 The inner, media-bearing core pressure pipe consists of resistant PE 100-RC.
- 03 The additive protective jacket made of modified polyolefin compound surrounds the pipe system and provides permanent protection - an active countermeasure to notches and scratches.

kiwa BRL K17101 / Class II & III